

대한예방의학회/한국역학회 코로나19 TF 주간 정책 리포트 14호

2020.08.04.

○ 안내

대한예방의학회/한국역학회 코로나19 TF 주간정책리포트를 통해 알리고자 하는 회원들의 코로나19 관련 발표(학회, 심포지엄 등)과 학술활동(논문, 보고서 등)에 대해 연락주시기 바랍니다. 또한 통계, 논문, 보고서 등 함께 나누고 싶은 내용이 있으면 보내주십시오. lhy0313@gmail.com으로 메일 주시면 정책리포트에서 소개하겠습니다.

- 7.28(화)에 개최된 코로나19 장기화 시기의 보건소대응 역량강화를 위한 워크숍(하남시, 전국보건소장협의회, 대한예방의학회, 한국역학회 공동 주최) 관련 소식은 동영상, 정리 자료 등이 완료되는 다음주에 소개합니다.

01 코로나19 주목할 만한 통계

- WHO는 8월1일 지난 6개월의 코로나 대응활동을 정리한, 'WHO COVID-19 Preparedness and Response Progress Report - 1 February to 30 June 2020'를 발표함(<https://www.who.int/publications/i/item/strategic-preparedness-and-response-plan-for-the-new-coronavirus>) 전세계 발생 현황과 대응 활동을 다양한 통계를 통해 제시하고 있음.

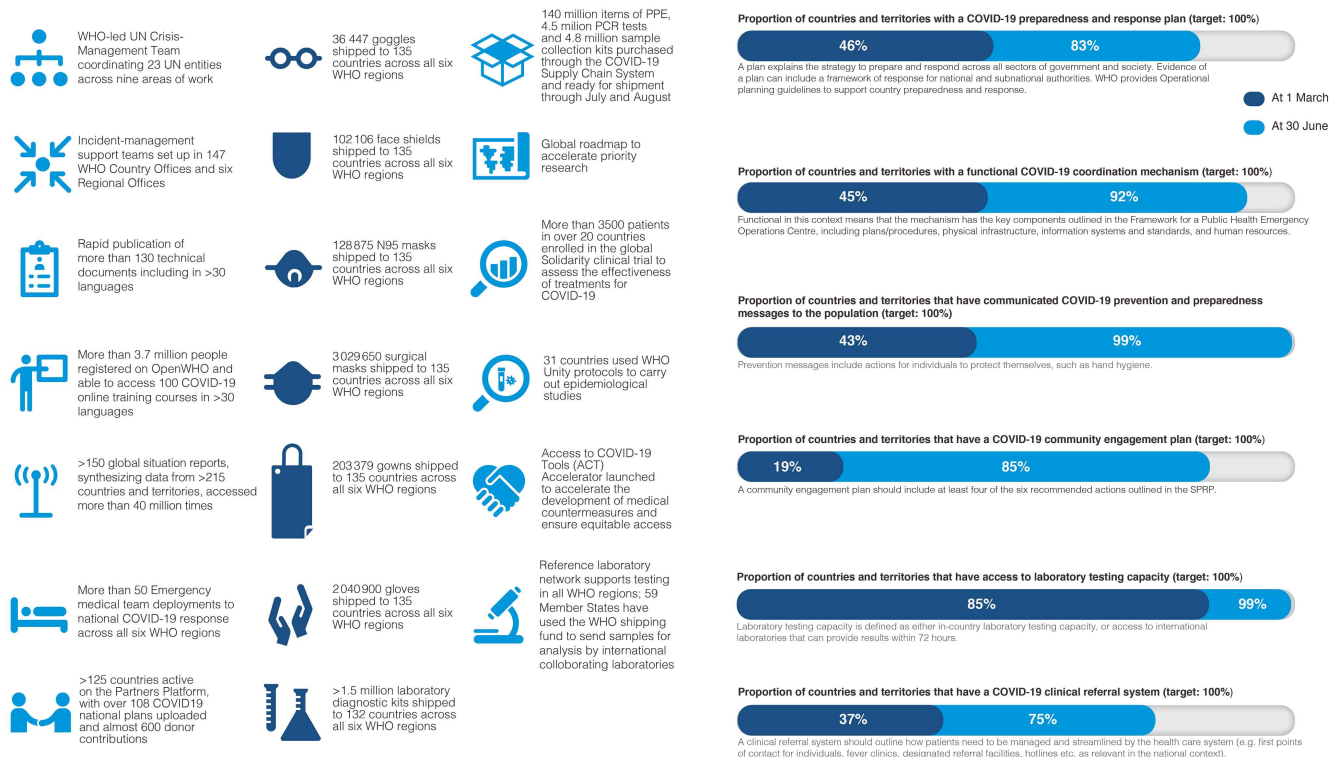
02 주요 논문과 보고서(2020.07.28.- 08.03)

1. 주요 논문

Chen YJ, Qin G, Chen J, Xu JL, Feng DY, Wu XY, Li X. **Comparison of Face- Touching Behaviors Before and During the Coronavirus Disease 2019 Pandemic.** JAMA Netw Open. 2020 Jul 1;3(7):e2016924. doi: [10.1001/jamanetworkopen.2020.16924](https://doi.org/10.1001/jamanetworkopen.2020.16924).

Katherine A. Auger, Samir S. Shah, Troy Richardson, Matthew Hall, Amanda Warniment, Kristen Timmons et al. **Association Between Statewide School Closure and COVID-19 Incidence and Mortality in the US.** JAMA. Published online July 29, 2020. doi:[10.1001/jama.2020.14348](https://doi.org/10.1001/jama.2020.14348)

....KEY RESULTS: FEBRUARY–JUNE



Adhikari S, Pantaleo NP, Feldman JM, Ogedegbe O, Thorpe L, Troxel AB. **Assessment of Community-Level Disparities in Coronavirus Disease 2019 (COVID-19) Infections and Deaths in Large US Metropolitan Areas.** JAMA Netw Open. 2020 Jul 1;3(7):e2016938. doi: [10.1001/jamanetworkopen.2020.16938](https://doi.org/10.1001/jamanetworkopen.2020.16938).

Pundi K, Perino AC, Harrington RA, Krumholz HM, Turakhia MP. **Characteristics and Strength of Evidence of COVID-19 Studies Registered on ClinicalTrials.gov.** JAMA Intern Med. 2020 Jul 27. doi: [10.1001/jamainternmed.2020.2904](https://doi.org/10.1001/jamainternmed.2020.2904).

Riediker M, Tsai DH. **Estimation of Viral Aerosol Emissions From Simulated Individuals With Asymptomatic to Moderate Coronavirus Disease 2019.** JAMA Netw Open. 2020 Jul 1;3(7):e2013807. doi: [10.1001/jamanetworkopen.2020.13807](https://doi.org/10.1001/jamanetworkopen.2020.13807).

Levinson M, Cevik M, Lipsitch M. **Reopening Primary Schools during the Pandemic.** N Engl J Med. 2020 Jul 29. doi: [10.1056/NEJMms2024920](https://doi.org/10.1056/NEJMms2024920).

Long H Nguyen, David A Drew, Mark S Graham, Amit D Joshi, Chuan-Guo Guo, Wenjie Ma et al. **Risk of COVID-19 among front-line health-care workers and the general community: a prospective cohort study.** Open Access Published: July 31, 2020 DOI: [https://doi.org/10.1016/S2468-2667\(20\)30164-X](https://doi.org/10.1016/S2468-2667(20)30164-X)

Fatimah S Dawood, Philip Ricks, Gibril J Njie, Michael Daugherty, William Davis, James A Fulle

r et al. **Observations of the global epidemiology of COVID-19 from the prepandemic period using web-based surveillance: a cross-sectional analysis.** Published: July 29, 2020 DOI: [https://doi.org/10.1016/S1473-3099\(20\)30581-8](https://doi.org/10.1016/S1473-3099(20)30581-8)

Nicholas J. Matheson^{1,2}, Paul J. Lehner. **How does SARS-CoV-2 cause COVID-19?** Science 31 Jul 2020: Vol. 369, Issue 6503, pp. 510-511. DOI: [10.1126/science.abc6156](https://doi.org/10.1126/science.abc6156)

Martha K. Berg, Qinggang Yu, Cristina E. Salvador, Melani, Shinobu Kitayama. **Mandated Bacillus Calmette-Guérin (BCG) vaccination predicts flattened curves for the spread of COVID-19.** Science Advances 31 Jul 2020:eabc1463. DOI: [10.1126/sciadv.abc1463](https://doi.org/10.1126/sciadv.abc1463)

Rochwerg B, Agarwal A, Zeng L, Leo YS, Appiah JA, Agoritsas T, Bartoszko J et al. **Remdesivir for severe covid-19: a clinical practice guideline.** BMJ. 2020 Jul 30;370:m2924. doi: [10.1136/bmj.m2924](https://doi.org/10.1136/bmj.m2924).

2. 주요 보고서

- WHO

Considerations for implementing mass treatment, active case-finding and population-based surveys for neglected tropical diseases in the context of the COVID-19 pandemic (2020.07.27.) <https://www.who.int/publications/i/item/WHO-2019-nCoV-neglected-tropical-diseases-2020-1>

Water, sanitation, hygiene, and waste management for SARS-CoV-2, the virus that causes COVID-19 (2020.07.29) <https://www.who.int/publications/i/item/water-sanitation-hygiene-and-waste-management-for-the-covid-19-virus-interim-guidance>

WHO COVID-19 Preparedness and Response Progress Report - 1 February to 30 June 2020 (2020.08.01) <https://www.who.int/publications/i/item/strategic-preparedness-and-response-plan-for-the-new-coronavirus>

- ECDC

COVID-19: EU guidance for cruise ship operations (2020.07.27.) <https://www.ecdc.europa.eu/en/publications-data/COVID-19-cruise-ship-guidance>